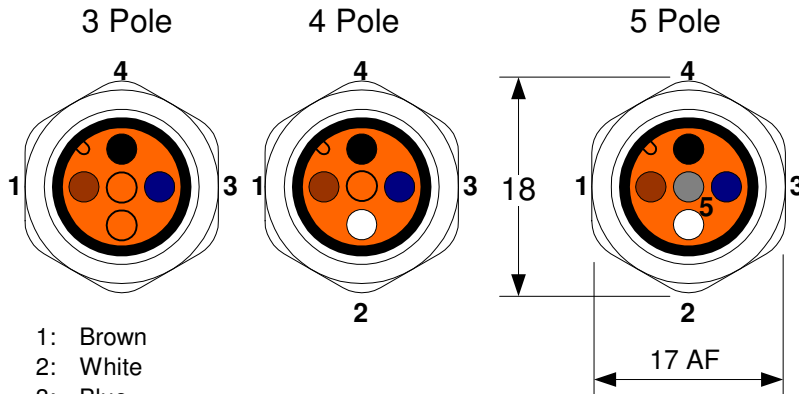


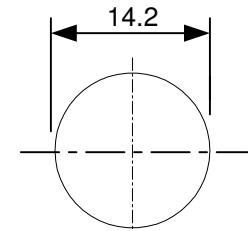
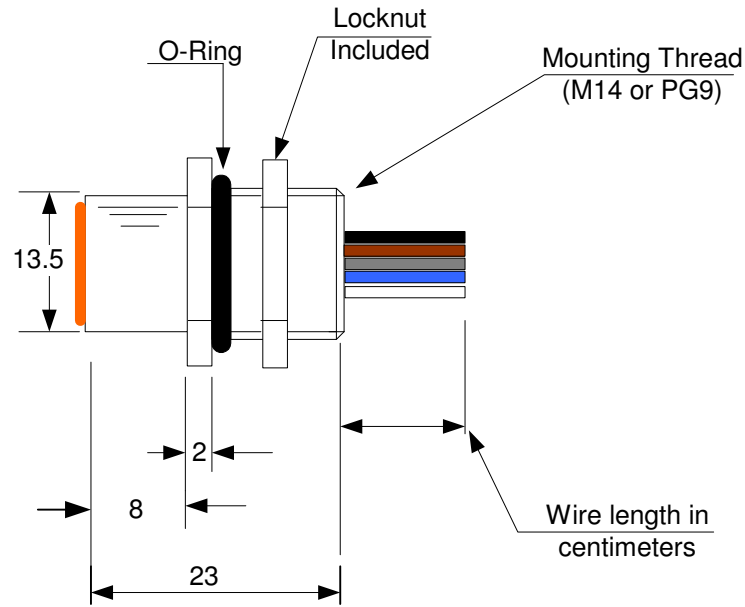


Data Sheet Number KA-DATA-001 A-Coded M12 Female Receptacles (M14 and PG9 Mounting Thread)

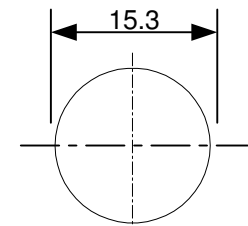
Face View



- 1: Brown
- 2: White
- 3: Blue
- 4: Black
- 5: Grey



Panel Cutout M14



Panel Cutout PG9

Material Specification:

Body: Brass, bright nickel plated
 Insert: PU R3000
 Contact: Brass, Gold over Nickel Plated
 Wires: PVC 0.34mm Stranded
 O-Ring: Internal 'Viton'
 O-Ring: External 'Nitrile'
 Resin: PU Composite

Electrical Specification:

Protection: IP68
 Operating Voltage: 250 VAC / VDC (3 and 4 Pole)
 60 VAC / VDC (5 pole)
 Current: 4 Amps
 Operating Temperature: -20C to +80C

Note:

All Dimensions are for Reference Only

Rev	Rev	Rev	Rev	Rev
A	xxx	xxx	xxx	xxx
Knect Assemblies Ltd				
First Avenue, Trecenydd, Caerphilly. CF83 2SD Tel: +2920 881130				



M12 Female A Code 3, 4 and 5 poles

Drawn By: Jeff Reynolds
 Date: 15/03/2010

KA-DATA-001