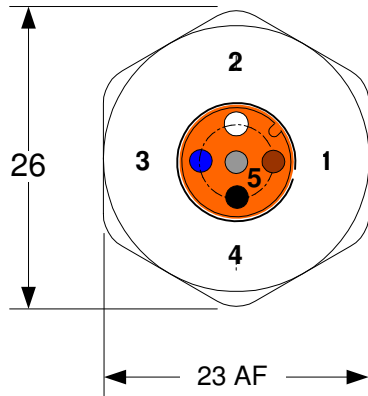


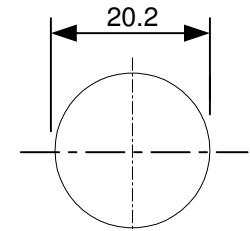
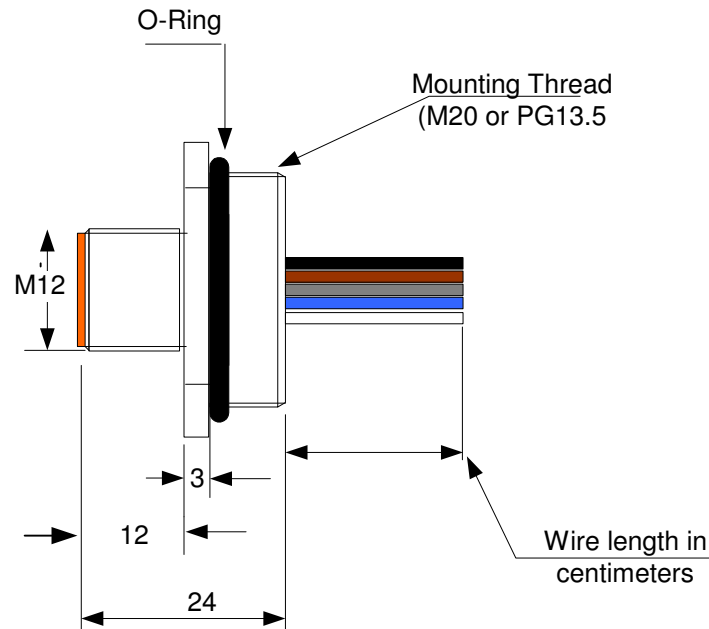


# Data Sheet Number KA-DATA-004 A-Coded M12 Male Receptacles (M20 and PG13.5 Mounting Thread)

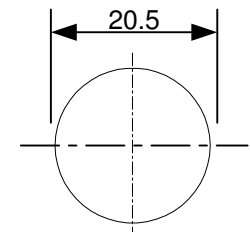
**Face View 5 Pole Shown**



- |               |               |               |
|---------------|---------------|---------------|
| <b>3 Pole</b> | <b>4 Pole</b> | <b>5 Pole</b> |
| 1: Brown      | 1: Brown      | 1: Brown      |
| 3: Blue       | 2: White      | 2: White      |
| 4: Black      | 3: Blue       | 3: Blue       |
|               | 4: Black      | 4: Black      |
|               |               | 5: Grey       |



Panel Cutout M20



Panel Cutout PG13.5

**Material Specification:**

Body: Brass, bright nickel plated  
 Insert: PU R3000  
 Contact: Brass, Gold over Nickel Plated  
 Wires: PVC 0.34mm Stranded  
 O-Ring: Internal 'Viton'  
 O-Ring: External 'Nitrile'  
 Resin: PU Composite

**Electrical Specification:**

Protection: IP68  
 Operating Voltage: 250 VAC / VDC (3 and 4 Pole)  
 60 VAC / VDC (5 pole)  
 Current: 4 Amps  
 Operating Temperature: -20C to +80C

**Note:**

All Dimensions are for Reference Only

Rev	Rev	Rev	Rev	Rev
A	xxx	xxx	xxx	xxx
<b>Knect Assemblies Ltd</b>				
First Avenue, Trecenydd, Caerphilly. CF83 2SD Tel: +2920 881130				



**M12 Male A Code 3, 4 and 5 poles**

Drawn By: Jeff Reynolds  
 Date: 13/05/2010

**KA-DATA-004**